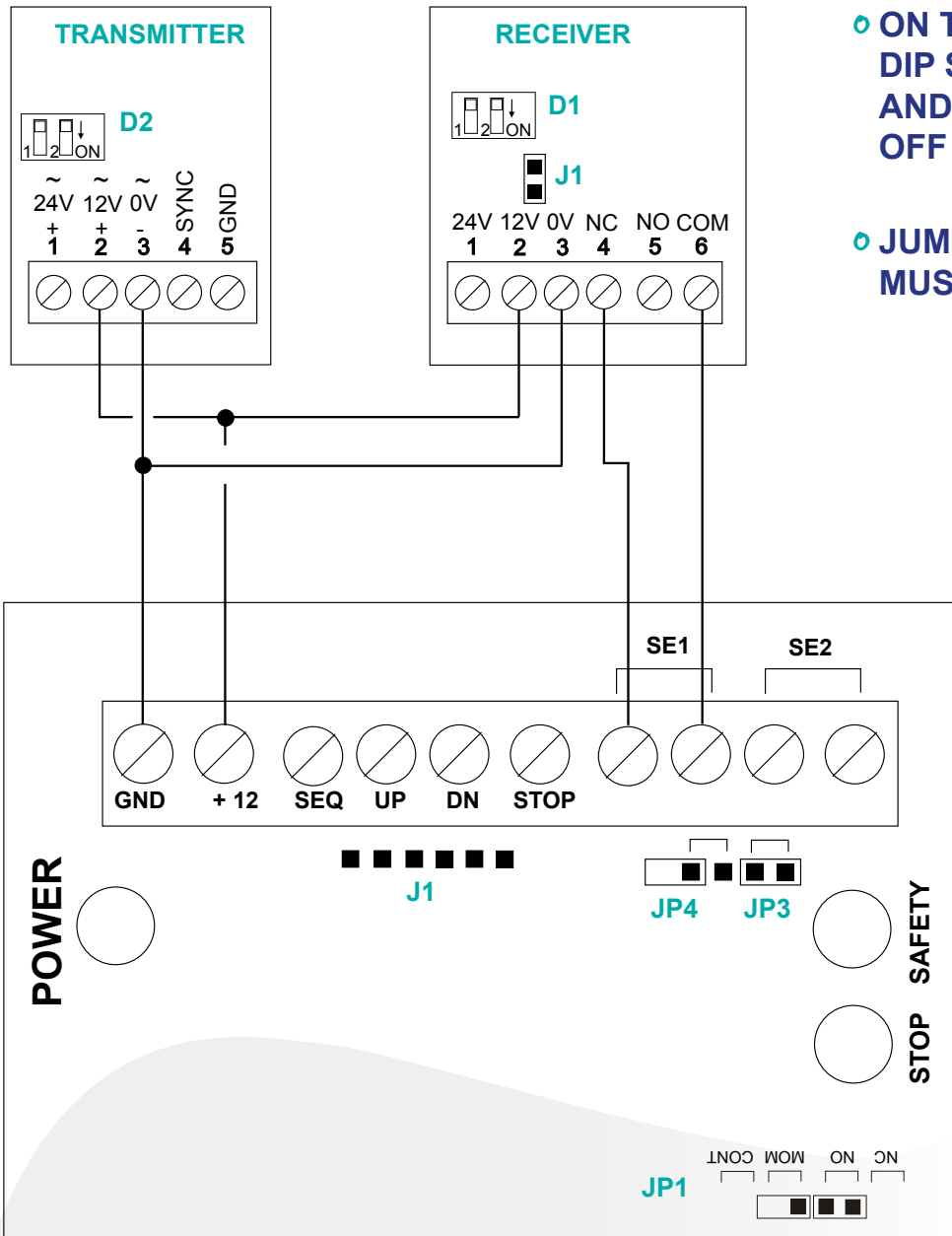


SMART MOTOR CONTROL (SMC)

CDR 999

CDR 999 INFRARED EYE BEAM



ON THE CDR 999 PHOTO EYES DIP SWITCHES 1 AND 2 ON D1 AND D2 SHOULD BE LEFT IN THE OFF POSITION AS SHOWN.

JUMPER J1 ON THE RECEIVER MUST BE LEFT ON.

ON THE SMC REMOVE JUMPER JP4 LEAVE JUMPER JP3 ON

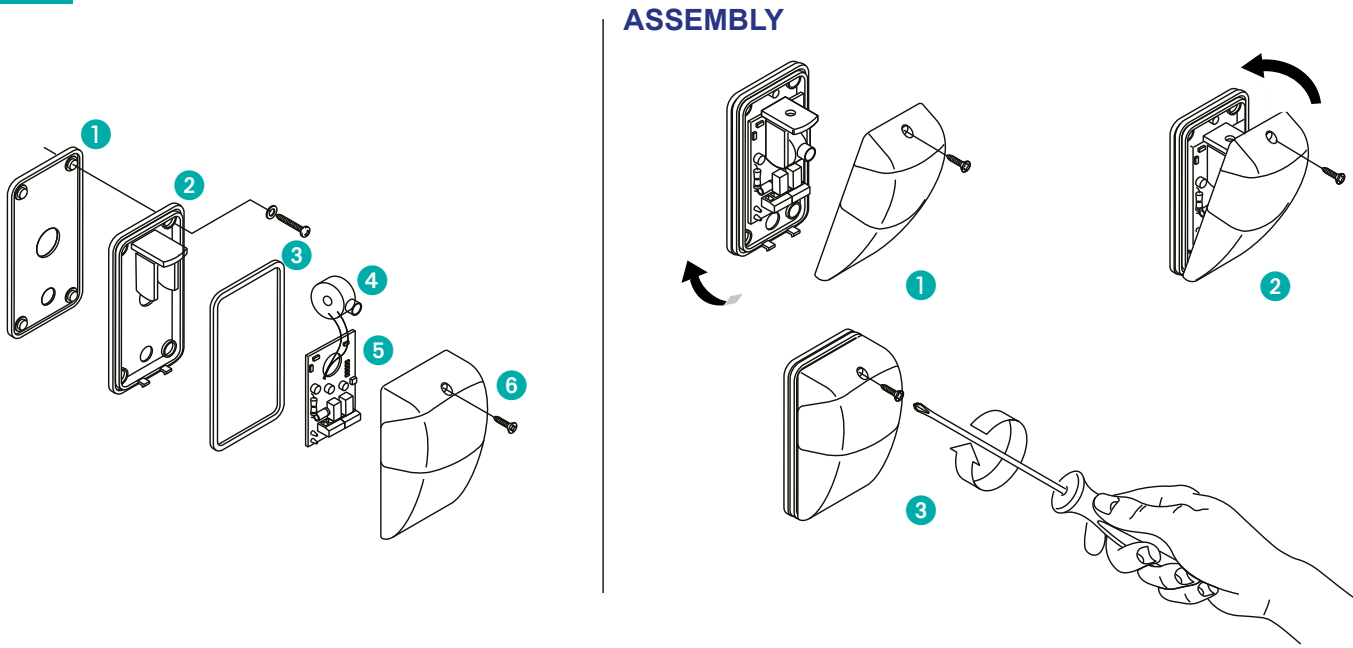


Fig. 1

DIMENSIONS

CONNECTIONS

TEST POINT

ALIGNMENT

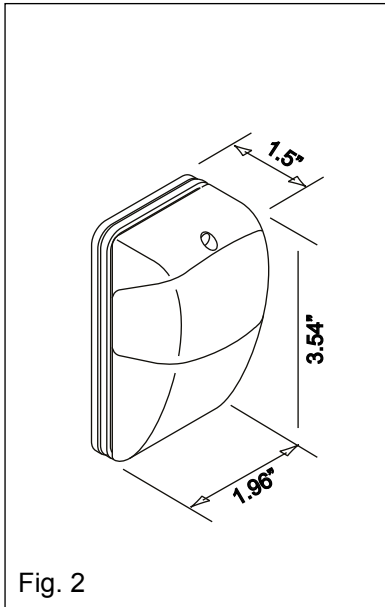


Fig. 2

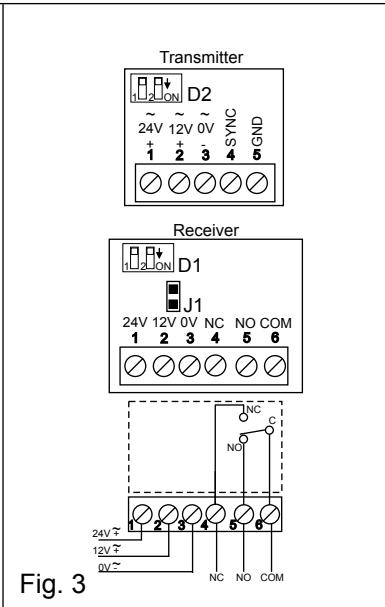


Fig. 3

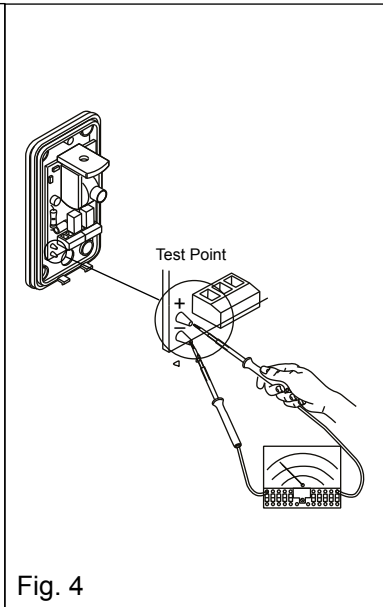


Fig. 4

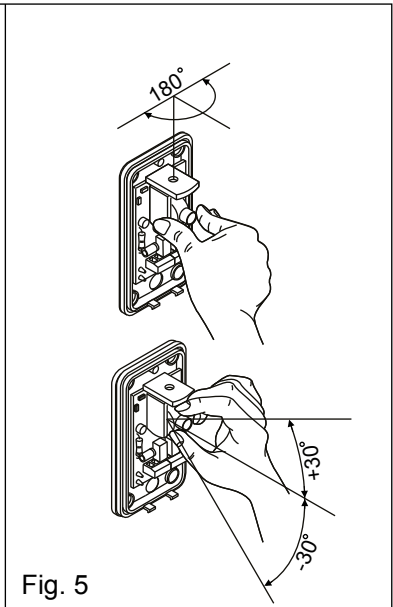


Fig. 5

DESCRIPTION

DESCRIPTION

- The CDR999 is an outdoor/indoor photoelectric beam and can be used with the SMC to control a tubular motor covering a passage way up to 30'

MOUNTING (FIG. 1)

- 1- Using the template on the lid of the box, mark the position of the transmitter and receiver and install gasket (A) and the mounting plate (B) in the desired locations using the four #6 flat head wood screws. When mounting to other than wood surfaces use the appropriate anchors.
- 2- Run the wires through the hole in the gasket and mounting plate and into the unit.

WIRING AND CALIBRATION

WARNING: DO NOT APPLY POWER UNTIL ALL CONNECTIONS HAVE BEEN MADE!

- 1- Connect wires as shown on page one of this addendum.
- 2- Power the units. The green LED on the transmitter will light. The red LED on the receiver will light only if the optic eyes are not aligned or beam is blocked.
- 3- Align the eyes using a DC voltage meter on the test point (Fig. 4). The meter should read 0.4V or higher when aligned. Confirm the red LED on the receiver is off and turns on when beams are blocked.
- 4- Seal the wire holes using the supplied rubber plugs. Install the cover and secure with supplied screws (Fig. 1 a,b,c)
- 5- **Test the function.** Note: If the eye when blocked causes the door to lower instead of raise, reverse the red and black motor leads.

TECHNICAL SPECIFICATIONS

OPTICAL:

- **Range:** up to 30 ft.
- **Transmitter beam width:** 6 degrees (typical)
- **Receiver field of view:** 6 degrees (typical)
- **Adjustment Vertical:** +/- 30 degrees
- **Horizontal:** 180 degrees

ELECTRICAL:

- **Voltage:** 12 or 24V AC/DC +/- 10%
- **Current consumption @ 12V:** 23mA (rest) 82mA (active)
- **Current consumption @ 24V:** 29mA (rest) 86mA (active)
- **Relay:** Form C (Com, NO, NC)
 - Relay drop out with loss of power
 - Contacts rated 28W DC / 60VA AC
 - Max V: 30V AC/DC
 - Max I: 500mA
- **Infrared source:** Double Gallium Arsenide LEDs
- **Transmitter frequency:** 25 kHz
- **IR wavelength:** 950 nm

ENVIRONMENTAL:

- **Operating temperature:** 14 to 131 degrees F (-10 to +55 degrees C)
- **Protection rating:** IP55

SOMFY SYSTEMS INC

SOMFY NORTH AMERICAN HEADQUARTERS

121 Herrod Blvd.
Dayton, NJ 08810
T: (800) 22-SOMFY (76639)
NJ: (609) 395-1300
F: (609) 395-1776

FLORIDA

1200 SW 35th Ave.
Boynton Beach, FL 33426
T: (800) 22-SOMFY (76639)
F: (561) 995-7502

CALIFORNIA

15301 Barranca Parkway
Irvine, CA 92618-2201
T: (800) 22-SOMFY (76639)
F: (949) 727-3775

SOMFY ULC

SOMFY Canada Division
5178 Everest Drive
Mississauga, Ontario L4W2R4
T: 1-800-66-SOMFY (76639)
CN: (905) 564-6446
F: (905) 238-1491

67

YEARS'
EXPERIENCE



FRENCH
BRAND



INVENTOR
OF TUBULAR
MOTOR



100%
OF OUR CUSTOMERS
WOULD RECOMMEND
US



20 MILLION MOTORS
INSTALLED
WORLDWIDE



www.simu.com

