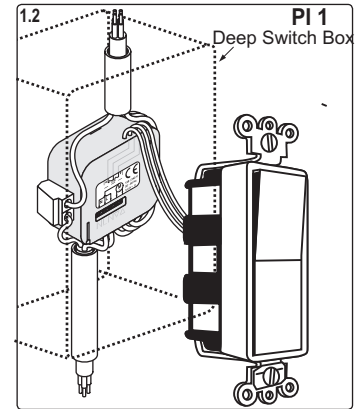
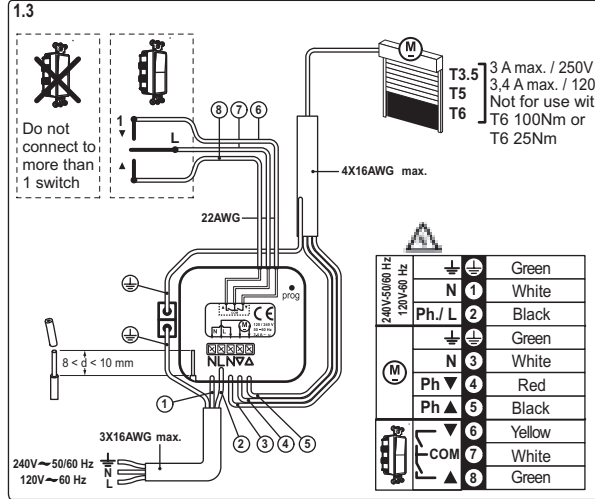
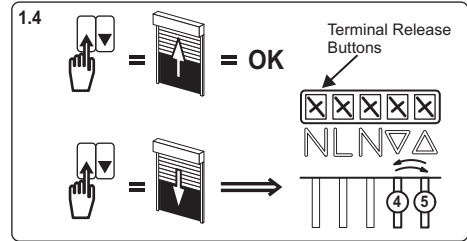
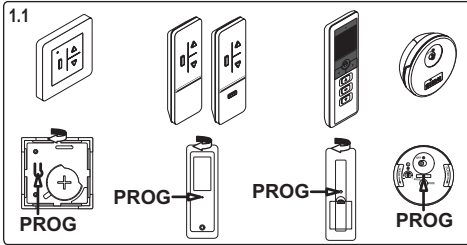


S.A.S. au capital de 5 000 000 € - Z.I. Les Giranaux - BP71 - 70103 Arc-Les-Grav CEDEX - RCS GRAY B 425 650 090 - SIRET 425 650 090 00011 - n° TVA CEE FR 87 425 650 090
 Read these instructions carefully before installation.



1 Installation

The Hz Micro-receiver is compatible with all SIMU 4 wired motors (rated less than 3A @ 240VAC or less than 3.4A @ 120VAC)

1.1 Compatible transmitters (12 max.)

- The Hz Micro-receiver is compatible with all SIMU Hz transmitters

1.2 Installation requirements

- This product must be installed in a listed electrical box by a licensed electrician in accordance with local and national electrical codes and in accordance with these instructions.
- The Micro-receiver must be the only control directly connected to the motor.

1.3 Wiring

- **Important:** Ensure the hot and neutral are wired to the correct terminals. Disconnect power before working on the receiver. The input power must be consistent with the motor power requirements (120VAC 60Hz or 240V 50/60Hz). The wires must not be under strain or stress after connection to the terminals. Do not connect more than 1 switch to the switch inputs. If a switch is not used, wires 6, 7 and 8 must be capped off independently.
- We recommend you use a tool to press on the terminal release buttons when inserting or removing wiring.

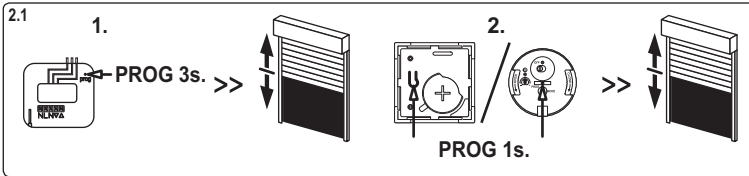
1.4 Checking the directional wiring of the switch:

- If pressing the ▲ button makes the motor roll the product up, reverse the red and black motor wires

1.5 Setting the motor limits

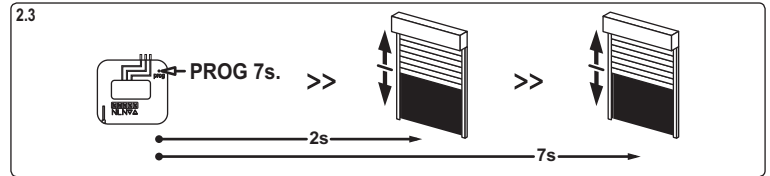
- It is recommended to set the motor limits before programming the transmitter to the Micro-receiver

2 Programming the receiver



2.1 Programming a new transmitter to the Hz Micro-receiver (individual or group)

1. Press the program button on the receiver or an already learned transmitter for 3 seconds until the motor jogs.
2. Press the programming button on the new transmitter and the motor will jog.
 - To create a group on a transmitter channel, repeat steps 1 & 2 for each Micro-receiver in the group
 - To delete a transmitter, repeat steps 1 & 2 with the transmitter to be deleted



2.3 To clear the programming of the Hz Micro-receiver: Press and hold the "PROG" button for more than 7 seconds. The motor will jog after approximately 2 seconds and will jog a second time a few seconds later. The memory has now been cleared.

3 Operation of the wired switch (momentary-pulse / maintained)

- An input pulse of less than half a second will run the motor to the limit unless a new command is given.
- An input for more than half a second will run the motor in the selected direction until the switch is released or the motor reaches its limit.
- An input in the opposite direction will change the direction of the motor. An input pulse in the same direction as the motor is running will stop the motor.

4 Characteristics

- Output: 3A max up to 240V or 3.4A up to 120V
- Capacity: one motor maximum
- RF: 433.42 MHz
- Dimensions: 41 x 45 x 19 mm
- Storage temperature: -30° C to 70° C
- Operational temperature: -20° C to 55° C
- Compliance: CE, UL pending
- Environmental classifications: Insulation Cat III and Pollution CatII

- IP Rating: IP20 as long as instructions are followed.
- For indoor use only.
- Maximum altitude for use: 2000m (6600ft)
- Do not expose to physical impact or shock