

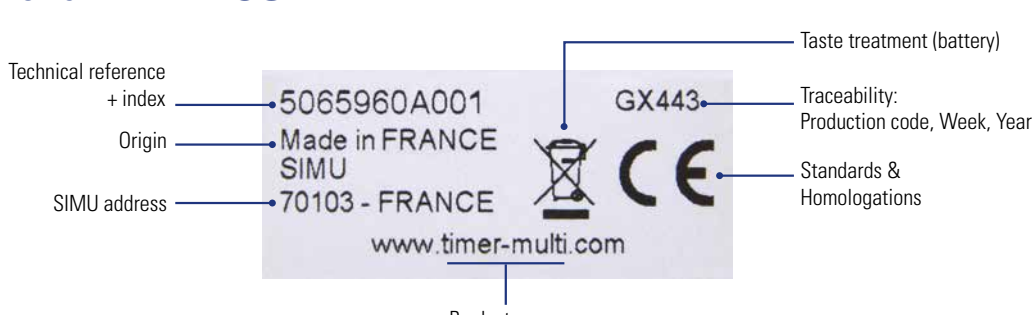
IDENTIFICATION & TRACEABILITY SIMU PRODUCTS

EACH SIMU MOTOR HAS AN IDENTIFICATION STICKER WITH A UNIQUE REGISTRATION NUMBER, STUCK ON THE TUBE, USEFUL TO HAVE ITS TECHNICAL INFORMATION AND ENSURE ITS TRACEABILITY.

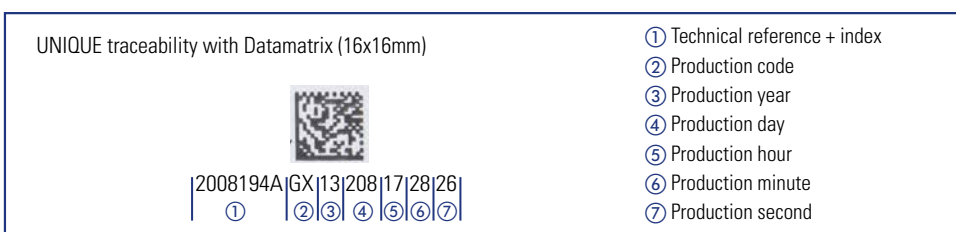
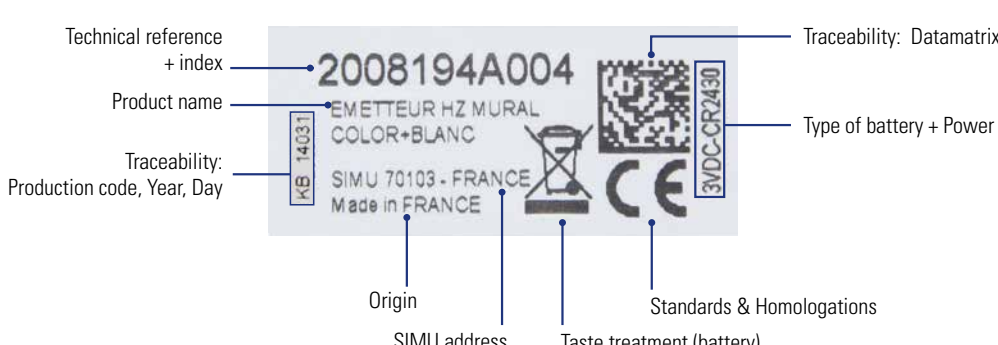
STICKERS FOR CONTROLS AND AUTOMATIC DEVICES



STICKER **WITHOUT** DATAMATRIX



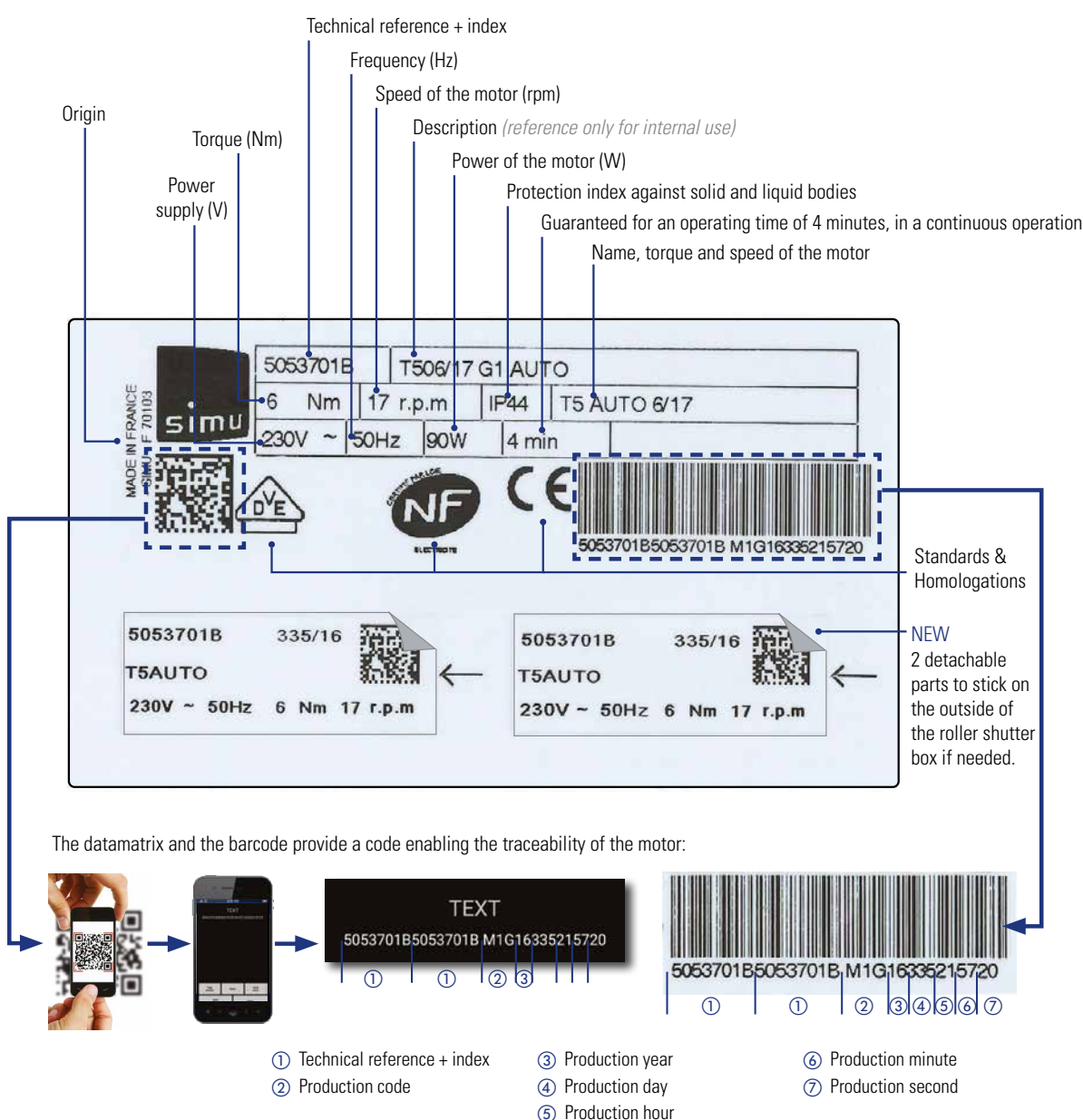
STICKER **FOR UNIQUE** REGISTRATION WITH DATAMATRIX



STICKERS FOR MOTORS

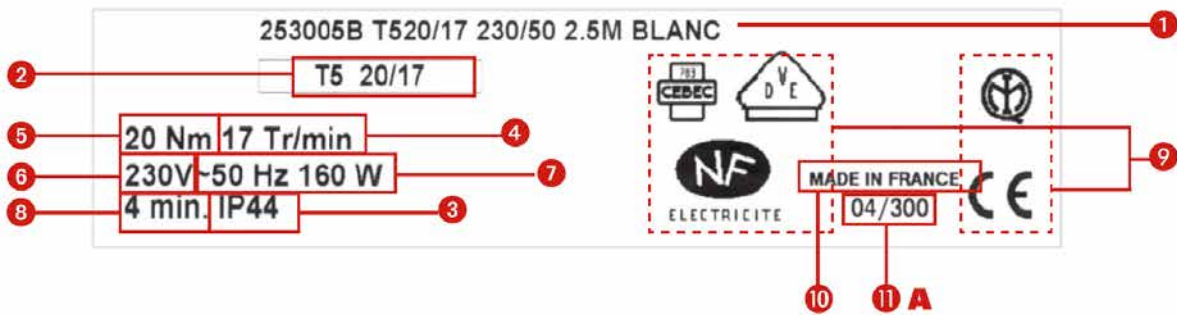


STICKER **FOR UNIQUE** REGISTRATION WITH DATAMATRIX & BARCODE

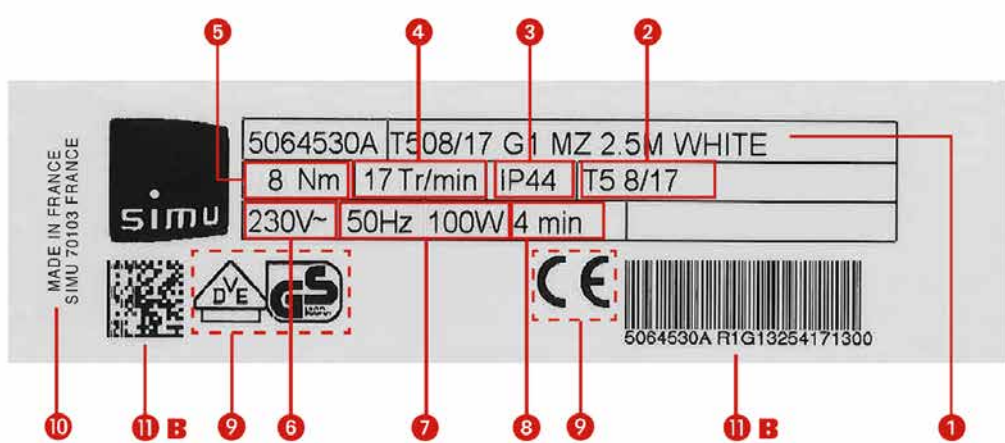


In case of repairing or of after-sales service, you may encounter motors with different stickers: these are older sticker models. However, the information given will be the same as those presented above.

OLD STICKERS FOR MOTORS



OLD STICKERS FOR MOTORS WITH DATAMATRIX & BARCODE



- 1 Technical reference + index and designation (reference only for internal use)
- 2 Name, torque and speed of the motor
- 3 Protection index against solid and liquid bodies
- 4 Speed
- 5 Torque
- 6 Power supply
- 7 Frequency (Hz) and power (W)
- 8 Guaranteed for an operating time of 4 minutes, in a continuous operation
- 9 Standards & homologations
- 10 Origin
- 11 A Traceability: AA/JJJ (year, day)
- 11 B Traceability: Datamatrix / Barcode

11 B UNIQUE traceability with Datamatrix (16 x 16 mm) or barcode (code 128)



OR



- 1 Technical reference + index
- 2 Production code (FF)
- 3 Production year (AA)
- 4 Production day (JJJ)
- 5 Production hour (HH)
- 6 Production minute (MM)
- 7 Production second (SS)